

CONNER
STRONG &
BUCKELEW

ACADEMY

WEDNESDAY, APRIL 30, 2025

EMPLOYEE BENEFITS Innovation Summit

10:00–11:00 AM

REGISTRATION/EXHIBITOR NETWORKING

Tour Mütter Museum

11:00–11:30 AM

WELCOME

State of the State of Healthcare & Benefits

Joseph DiBella

Anticipated healthcare policy shifts under the new administration and their impact on employer sponsored benefits – including potential changes to the ACA, drug pricing regulations and transparency requirements.

11:30 AM–12:00 PM

What's in the Pharmacy Pipeline:

An Rx State of the State

Simon Leung, PharmD, RPh

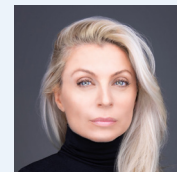
New and upcoming pharmaceuticals and their potential impact on plan costs, coverage decisions and access to care - including specialty drugs and GLP-1 medications.

12:00–12:30 PM

Indexed Reimbursement & Captive Solutions

Joseph DiBella

- Leveraging an indexed reimbursement model, such as PERMA FAIR, to help self-funded businesses reduce healthcare costs, eliminate unnecessary fees and streamline claims processing.
- How an Employee Benefits Captive can drive potential cost-savings, more predictable healthcare costs and better claims control through pooling risk among multiple organizations.



Evy Poupouras

Former Secret Service Special Agent and Interrogator
Co-Host of Bravo TV's "Spy Games"



Joseph DiBella

Executive Partner
National Employee Benefits Practice Leader
Conner Strong & Buckelew



Simon Leung, PharmD, RPh

Vice President
Head of Pharmacy
Conner Strong & Buckelew

SPEAKERS

Innovation Summit

12:30–1:30 PM

LUNCH AND EXHIBITOR NETWORKING

Tour Mütter Museum

1:30–2:15 PM

PANEL DISCUSSION

Innovators in Population Health

Moderators:

Kristine Klepper, CEBS and Jill Ambrose, MBA, BSN, RN

Panelists:

Meesha Dogan, Ph.D., Colin Rogers, and Shelly Lanning

Industry innovators will discuss how AI and telehealth offer the potential for long-term healthcare cost savings by improving employees' access to preventative care and their ability to take a proactive approach to their health.

2:30–3:30 PM

KEYNOTE

Own Your Decisions

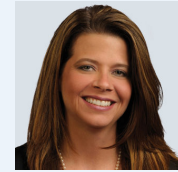
Evy Poumpouras

In this keynote and call to action for leaders, Evy Poumpouras reflects on her experiences as a Secret Service Special Agent and leader to reveal the common behaviors of elite leaders and the actions anyone can take to authentically connect with their teams, positively influence people and outcomes, avoid paralysis toward progress and create high-achieving cultures. The tactics she shares help leaders build cognitive resilience, move on from past decisions, and operate with a solutions-oriented mindset.

3:30–4:30 PM

NETWORKING RECEPTION

Enjoy cocktails, hors d'oeuvres, and lots of great conversation with industry professionals.



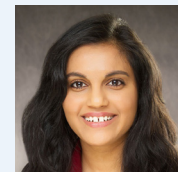
Kristine Klepper, CEBS

Executive Partner
Chief Operating Officer Employee Benefits
Conner Strong & Buckelew



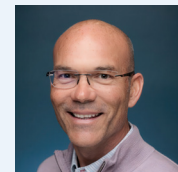
Jill Ambrose, MBA, BSN, RN

Partner, Head of Population Health
Conner Strong & Buckelew



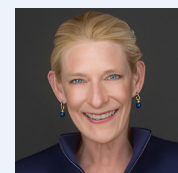
Meesha Dogan, Ph.D.

CEO & Co-Founder
Cardio Diagnostics



Colin Rogers

Vice President Healthcare
Signos



Shelly Lanning

Co-Founder & President
Visana Health, Inc.